

CELLSTOP SVR 600 MINI-FLEET UNIT

The CellStop SVR 600 Mini-Fleet Unit is the most advanced automotive tracking, security and personal management device currently in the market. CellStop has developed a product that not only provides the security aspects required by our customers, but also enables them to actively control their vehicles and draw useful information about its use and health status. The triad of communications between User, Vehicle and Control Centre is unique in the market.

Traditionally vehicle tracking systems only communicate with the central server. CellStop has developed a secure yet friendly system allowing the user direct access to useful information directly from the vehicle. One of the key advantages of bringing the user into the operational loop is that the integrity of the system is maintained as the customer immediately notices when they cannot find their vehicle. This results in a higher rate of recovery.

WRU (Where aRe yoU)

Via SMS it is possible to request a co-ordinate position of your vehicle which would be delivered to your cellphone via SMS. The response will give a street address and distance to other points of interest, together with the status of the vehicle, eg. the speed, ignition on or off and it confirms that it has GPS Lock .

VRU (Visual where aRe yoU)

Similar to the WRU, the User can request a visual rendering of the same information and view an indication of the vehicle position on a map image on his / her cell phone. The User has the option to view the position on any of the three map zoom levels. All the text detail contained in the WRU is also included in the VRU.

CA 377 838
Upper Orange Street
800m Holiday Inn
Cape Town
South Africa
Ignition Off



CELLSTOP WEB LOCATE

A web interface that is specifically designed for the CellStop SVR 600 Mini Fleet Unit. This allows the user to draw current and historical information as well as pin-point locations of the unit. The User has the option to view the information on their choice of either animated maps or Hybrid maps which combines the animated maps with satellite images. The following reports can also be drawn on the Web Locate on demand:

REPORTS ON VEHICLES

- Alarm Report
- Trip Summary Report
- Trip Day Summary Report

REPORTS ON VEHICLE FLEETS

- Alarm Report
- Trip Summary Report
- Trip Day Summary Report



Over and above these reports the SVR 600 can be set up to e-mail various scheduled reports to the user or additional users. Examples of these reports are displayed overleaf.

STANDARD FEATURES

- WRU (Where aRe yoU)
- VRU (Visual where aRe yoU)
- Panic Button
- Battery Disconnect
- Hijack Alarm
- Overspeeding
- Daily Report
- GPRS Activated
- Web Access
- E-mail Reports
- Idling Report

ALARMS (Monitored by Control Centre)

- Panic Alarm
- Battery Disconnect
- Hijack Alarm

Included in Monthly Service Fee

- 50 x Free SMS's + 2 MB Free Data (include - WRU & VRU Capability) and Daily Report via SMS
- 24/7 Call Centre Hotline
- 24/7 Alarm Monitoring
- 24/7 Recovery within the borders of SA
- Daily Health Check (Heart Beat)
- E-Mail Reports
- Call Centre Support

THE SVR CONTROL CENTRE SOFTWARE SOLUTION

The Control Centre Solution is designed to equip the monitoring and recovery teams with the most sophisticated system providing all the tools necessary to effect a successful recovery. The architecture of the system enables the monitoring and recovery centres to be separated and still provide full and secure access to the vehicles to allow real up to the second monitoring whilst a hijack is in progress.

The Control Centre staff consists of well trained and experienced Control Centre Operators, Dedicated Supervisors and Top Class Management. All the Control Centre Staff are available to CellStop customers on a 24/7 basis in case of any emergency.

The Control Centre will monitor the following Alarms:

Battery Disconnect Alarm

Immediate notification is communicated on the disconnection of the main battery of the vehicle.

Panic Alarm

An alarm is sent immediately once the panic button in the vehicle is pressed.

Hijack Alarm

A hijack alarm can be sent from any cell phone to the vehicle, and the Control Centre will be alerted.

When any of the above alarms are received, the Control Centre will validate such alarm and respond simultaneously. All the alarms are considered to be an emergency and are dealt with accordingly.

The Control Centre in conjunction with the Technical department of CellStop will also monitor the following:

Heart Beat - Unit Health Check

The unit reports into the Control Centre daily to confirm its functionality. The server raises an alarm if the unit does not report in at its designated time. Should this happen the Technical Department will be informed so as to deal with the matter immediately.

The highly qualified and experienced Recovery field agents and recovery response teams are available 24/7 to attend to any emergency within the borders of South Africa. Air Support is available in major cities throughout South Africa. Senior Management with exemplary testimonies are accountable for the Recoveries and Recovery network.

Live Tracking of Vehicles

The map (bottom right) shows a live track of a vehicle being recovered. The arrows in the circles indicate the direction of travel. The red dot indicates the panic alarm.

Trip Day Summary 01 Feb 2007 to 07 Feb 2007

Vehicle: Reg CA861359 Make:Toyota Model:Hilux

Starting Location: Floor Cr, 113m FROM Vong Way (M16), 31km FROM S.O.S. Children's Village, 4.50km SE OF Brooklyn, Car:Thomson, Western Cape.

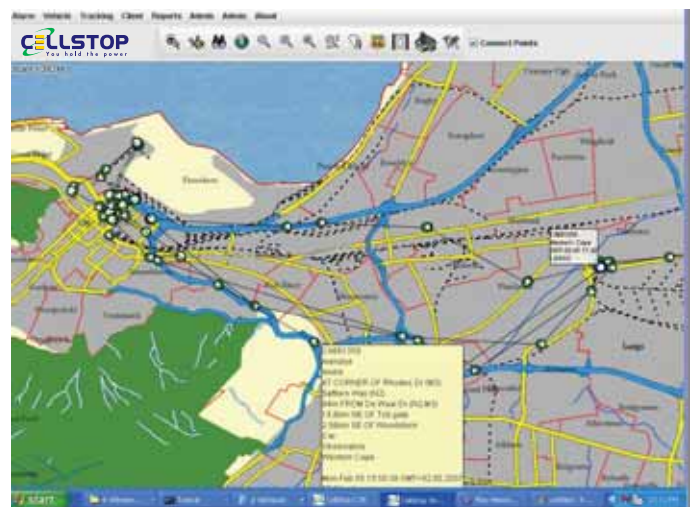
Day	Time	From	To	Duration	Distance	Trav. Sp.	Max. Sp.	Max. Acc.	Acc. From	To	
2007-02-01	25	07:51	16:39	02:19:19	75km	95:31:47	02:14:12	108.00	11.7%	From Cr, 113m FROM Vong Way (M16), 31km FROM S.O.S. Children's Village, 4.50km SE OF Brooklyn, Car:Thomson, Western Cape.	From Cr, 113m FROM Vong Way (M16), 31km FROM S.O.S. Children's Village, 4.50km SE OF Brooklyn, Car:Thomson, Western Cape.
2007-02-02	22	08:17	17:29	04:15:00	102km	01:13:30	02:05:00	122.00	17.27	From Cr, 113m FROM Vong Way (M16), 31km FROM S.O.S. Children's Village, 4.50km SE OF Brooklyn, Car:Thomson, Western Cape.	From Cr, 113m FROM Vong Way (M16), 31km FROM S.O.S. Children's Village, 4.50km SE OF Brooklyn, Car:Thomson, Western Cape.
2007-02-03	1	09:33	09:36	00:03:00	0km	00:01:36	00:01:36	7.00	0.00	From Cr, 113m FROM Vong Way (M16), 31km FROM S.O.S. Children's Village, 4.50km SE OF Brooklyn, Car:Thomson, Western Cape.	From Cr, 113m FROM Vong Way (M16), 31km FROM S.O.S. Children's Village, 4.50km SE OF Brooklyn, Car:Thomson, Western Cape.
2007-02-06	19	07:36	16:54	02:37:00	75km	02:40:28	02:14:21	107.00	14.28	From Cr, 113m FROM Vong Way (M16), 31km FROM S.O.S. Children's Village, 4.50km SE OF Brooklyn, Car:Thomson, Western Cape.	From Cr, 113m FROM Vong Way (M16), 31km FROM S.O.S. Children's Village, 4.50km SE OF Brooklyn, Car:Thomson, Western Cape.
2007-02-06	17	07:53	17:12	03:14:01	105km	02:43:16	02:17:38	116.00	18.00	From Cr, 113m FROM Vong Way (M16), 31km FROM S.O.S. Children's Village, 4.50km SE OF Brooklyn, Car:Thomson, Western Cape.	From Cr, 113m FROM Vong Way (M16), 31km FROM S.O.S. Children's Village, 4.50km SE OF Brooklyn, Car:Thomson, Western Cape.
2007-02-07	28	07:29	17:01	03:11:00	88km	02:30:02	02:04:51	108.00	13.90	From Cr, 113m FROM Vong Way (M16), 31km FROM S.O.S. Children's Village, 4.50km SE OF Brooklyn, Car:Thomson, Western Cape.	From Cr, 113m FROM Vong Way (M16), 31km FROM S.O.S. Children's Village, 4.50km SE OF Brooklyn, Car:Thomson, Western Cape.
				492km	02:36:02	02:17:39	122.00				

Trip Summary 01 Feb 2007 to 05 Feb 2007

Vehicle: Reg CA861359 Make:Toyota Model:Hilux

Starting Location: Floor Cr, 113m FROM Vong Way (M16), 31km FROM S.O.S. Children's Village, 4.50km SE OF Brooklyn, Car:Thomson, Western Cape.

Day	Duration	Start	Stop	Time Sp.	Max. Sp.	Max. Acc.	Acc. From	To
01 Feb 2007	07:59:16	07:51	16:39	02:19:19	95:31:47	02:14:12	108.00	11.7%
02 Feb 2007	08:17:16	08:17	17:29	04:15:00	01:13:30	02:05:00	122.00	17.27
03 Feb 2007	09:33:01	09:33	09:36	00:03:00	00:01:36	00:01:36	7.00	0.00
06 Feb 2007	07:36:19	07:36	16:54	02:37:00	02:40:28	02:14:21	107.00	14.28
06 Feb 2007	07:53:17	07:53	17:12	03:14:01	02:43:16	02:17:38	116.00	18.00
07 Feb 2007	07:29:28	07:29	17:01	03:11:00	02:30:02	02:04:51	108.00	13.90
Total	49:27:06	07:51	16:39	02:19:19	95:31:47	02:14:12	108.00	13.90



Preferred Network Service Provider

EMERGENCIES:



Recovery Control Centre: 0861 011 911

CALL CENTRE:

Help Desk: 08600 CSTOP Fax: 08600 CSFAX